

REMOTE MONITORING & CONTROL SYSTEM

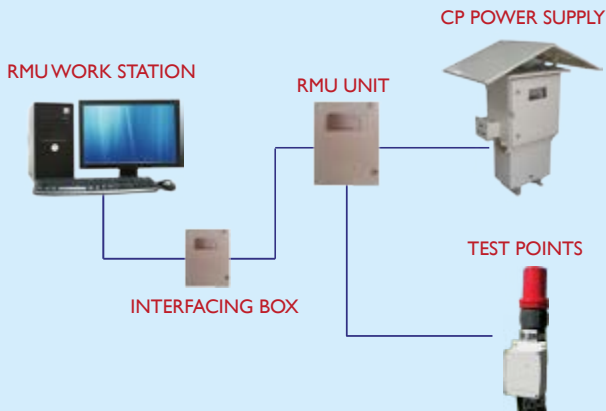
CATS-EYE™



**Your eyes to
Cathodic Protection System**

HARDWARE

CP RMU can be integrated with any existing CP power supply to collect and deliver the prescribed parameters to the base. CP RMU can be used as a replacement to any test station.



REMOTE MONITORING & CONTROL SYSTEM

Application

The Remote Monitoring and Control System (RMCS) is designed to monitor and control Impressed Current Cathodic Protection System Remotely. RMCS helps you to accomplish complete control of the Cathodic Protection operation in a plant, in desert or in deep sea. Features RMCS consists of its own power supply units, software, communication and hardware for control monitoring & data logging. The site based equipment has local data logging facility which works on the embedded software and instructs the logic for monitoring and / or control. Power supply unit and the rest of the hardwares are placed in an instrument box or in a cabinet. The inbuilt hardware controls power supply output, communicate with remote PC in control room through radio communication which has zero operation/service charges by any third party. The software in Remote Computer communicates with RTU for Control, Monitoring and Data logging. It provides access to all functions of the RTU and a user-friendly interface with graphics. Major Monitoring and Controls available with RMCS are :

- ▶ Auto Reference Mode
- ▶ Interruption Cycle
- ▶ Site Programming
- ▶ Alarms and call back
- ▶ Data Recording
- ▶ Analytical Data Interpretation
- ▶ Graphical Report Generator
- ▶ Real Time Monitoring
- ▶ Reference Potential Monitoring & Control
- ▶ Reference, DC Voltage, DC Current monitoring and control

Environmental Conditions

Ambient Temp	-10°C to 60°C
Storage Temp	-10°C to 60°C
Humidity	5 to 95%
Size	Customized

Electrical Interface

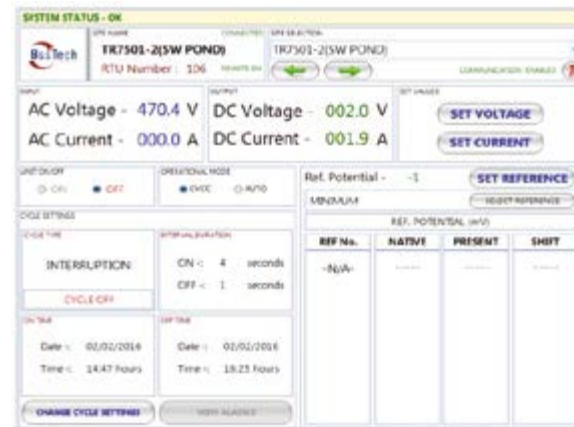
Input Voltage	230VAC
Surge Protection	Yes
Circuit Protection	Optical Isolation

Communication Interface **

Communication Protocol	Standard Modbus RTU
Wireless	Yes
Frequency	2.4 GHz
Optical Interfacing	Yes
TCP/IP	Yes
Ethernet Topology	Yes

** All other modes of communication like RS485, fibre optic and radio are available. Requirement used to be specified.

Real Time Voltage, Current, Reference Monitoring



Report Generator & Data Recording

